



# ELEMENTAL

Design, LLC

Tel 504.701.9994

Fax 228.832.9997

14376 Campground Road  
Saucier, MS 39574

## Capabilities Statement

Elemental Design, LLC is dedicated to improving quality of life for employees and visitors to federally operated facilities. We provide functional, high quality design, within budget and on schedule. Attention to detail, integrity and communication ensure success.

Suzanne (Dummer) Stafford, LEED AP

Principal [suzanne@elemental-design.com](mailto:suzanne@elemental-design.com)

### Services

Master Planning	Programming
Design Intent Documents	Interior Design
Construction Documents	Space Planning
LEED Certification	Furniture Specification
Construction Administration	Cost Estimating
Furniture, Fixture & Equipment Procurement	

### Company Designations

CAGE: 5NMV3

DUNS: 831709949

EIN: 27-0484148

SAM Registered

### Key Personnel

### Professional Registrations

Registered Interior Designer  
 MS Certified Interior Designer #18  
 LEED-AP  
 NCIDQ (National Council for Interior  
 Design Qualification Certificate Holder)  
 Certified Legacy Advisor (Inter-  
 national Association of Story Keepers)

**Principal: Suzanne (Dummer) Stafford, LEED AP:**  
 A licensed Mississippi interior designer with over twenty-five years of diversified corporate and federal experience in architectural design, facilities programming, space planning, interior design, interior detail development, furniture planning and specifications. She has been responsible for the successful relocations of major governmental agency headquarters to new or remodeled locations with increased efficiency. She has programmed and space planned hundreds of thousands of square feet of corporate and governmental space in her career. Project sizes have ranged from one office to 630,000 sf.

### Certifications

Woman Owned Small Business  
 (WOSB)  
 Economically Disadvantaged  
 Woman Owned Small Business  
 (EDWOSB)

Suzanne has over ten years of experience managing projects procured under individual contract, facilities work orders\* and multi-year Indefinite Quantity contracts\* with the General Services Administration throughout GSA Region 4 (FL, NC, SC, KY, TN, GA, AL); Region 7 (TX, OK, LA, AR, NM); Region 9 (CA, NV, AZ, HI) and Region 5 (IL, IN, MI, MN, OH, WI)\*. \*

### NAICS Codes

541410 Interior Design Services  
 541310 Architectural Services  
 541340 Drafting Services  
 541430 Graphic Design Services  
 442291 Window Treatment Stores  
 611430 Prof & Mgmt Dev Training

Suzanne's knowledge in designing with state-of-the-art furniture systems and creativity in interior design solutions is unparalleled. She is noted for being an expert in programming and space planning. She develops imaginative, resourceful designs within the client's budget. Her wide-ranging involvement in projects of various sizes and complexity has augmented her ability to solve the programmatic needs of the user client. All designs are within the parameters of allowable square footage and standards to provide a highly efficient, well designed and pleasant workspace for the end users.

### SIC Codes

7389 Business Services, NEC  
 8712 Architectural Services

Suzanne has extensive experience providing technical expertise and technical quality control to design and modify projects to be in compliance with applicable building as well as fire and life safety codes and accessibility requirements. She is very familiar with all government regulations and standards.

### PSC Codes

C211 Architectural/Eng SERVICES  
 C215 A/E PROD ENG SERVICES  
 C219 OTHER A/E SERVICES  
 C1PB A/E Exhibit Design SERVICES  
 D313 CAD Drafting

Suzanne has over twenty-five years of diversified experience in window covering design, procurement, fabrication and installation for commercial and residential spaces.



**ELEMENTAL**

Design, LLC

Tel 504.701.9994

Fax 228.832.9997

14376 Campground Road  
Saucier, MS 39574

## Capabilities Statement

### Selected Projects by Suzanne (Dummer) Stafford

#### Branch Office Locations

Saucier (Gulfport), MS  
Black Hills and South Dakota -  
Newcastle, WY  
Phoenix - Apache Junction, AZ

#### Design Process

Principal Suzanne Stafford works closely with clients to outline project staff / support space requirements thereby promoting work efficiency through optimal location of operational and functional elements during the space planning process.

Suzanne stays in tune with design trends in the media which benefits her ability to research and select design enhancing interior products and finishes suited to the intended environment.

#### Window Coverings Project Highlights

Solar Shades: Dummer & Lowery,  
PLLC (law firm) offices

Custom Drapery: Dr Davis Residence  
Custom Drapery: Bossier Residence  
Custom Shades: Morgan Residence  
Custom Drapery: Grow Residence  
Motorized Solar Shades: Residence

#### Education: Suzanne Stafford

Bachelor of Interior Design, FIDER  
accredited, Interior Design Institute  
Denver, CO

#### Selected Projects

\* Work performed with previous firm,  
procured under individual contract,  
facilities work orders and multi-year  
Indefinite Quantity contracts with  
GSA.

\*\* Work performed with previous firm  
under commercial contract.

- **Administrative Office of the US Courts** 4 Projects in progress  
**Capital Security Program Project Study Federal Courthouse**  
Detroit, MI (631,871 RSF); Portland, ME (75,188 RSF);  
Augusta, GA (55,441 RSF); Fort Wayne, IN (106,669 RSF).  
(Subcontractor to CRA Architecture, Inc. Assess existing building  
conditions, prepare concept space plans, report for Congress)
- **770 Water Street Offices** Biloxi, MS  
(2,500 SF. Interior Build-out and renovation, signage, window  
covering, furniture and art specification and procurement ).
- **Dummer & Lowery, PLLC Offices** Gulfport, MS  
(1,775 SF. Interior Build-out and renovation, signage, window  
covering, furniture and art specification and procurement ).
- **AAS Arguelles Auto Sales** Gulfport, MS  
(600 SF \$20,000 construction, \$9,500 FF&E. Renovation, furniture  
and art specification and procurement).
- **San Francisco Federal Building Relocation - Furniture Inventory \***  
(100,000 SF furn inv, database, move plans, multiple agencies).
- **Nuclear Regulatory Commission \*** Atlanta, GA  
(85,000 SF programming, prototypical furniture design standards  
guide, universal floor plate design).
- **US Bankruptcy Court Relocation \*** Grand Rapids, MI  
(55,000 SF renovation – programming to DIDs)
- **US District and Bankruptcy Court Relocation \*** Terre Haute, IN  
(14,000 SF new constr. interior design – programming to DIDs)
- **Internal Revenue Service \*** Phoenix, AZ  
(130,000 SF renovation – programming to DIDs, constr. \$90 M)
- **Department of Homeland Security \*** Atlanta, GA  
(45,000 SF new construction interior design – programming to  
DIDs, finish selections, \$21.7 million)
- **Health and Human Services \*** Miami, FL  
(30,300 SF renovation – programming to DIDs)
- **Health and Humans Services  
National Signage Standards Development \***
- **Foley Federal Building Renovation \*** Las Vegas, NV  
(150,000 SF renovation – programming to DIDs)
- **Department of Homeland Security \*** Seattle, WA  
(154,000 SF new constr. interior design – programming to DIDs)
- **GSA PBS Southeast Sunbelt Region Headquarters \*** Atlanta, GA  
(60,000 SF renovation – programming to DIDs, finish selections)
- **Phoenix Federal Building Renovation \*** Phoenix, AZ  
(100,000 SF renovation – programming to DIDs)
- **Department of Labor – EBSA \*** Chicago, IL  
(13,500 SF renovation – programming to DIDs)
- **FireKeepers Casino \*\*** Battle Creek, MI  
(236,000 SF new constr. Int. CDs, Furniture, Art RFP/RFIs, \$300M).



# ELEMENTAL

Design, LLC

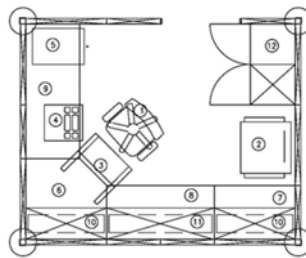
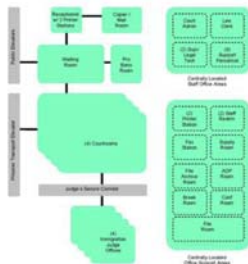
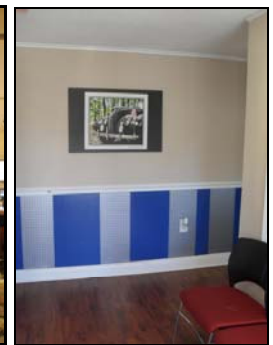
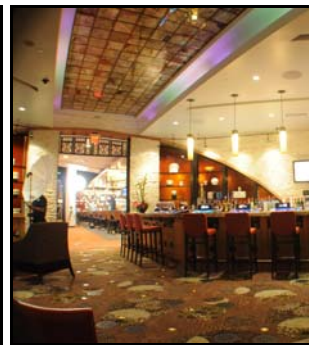
Tel 504.701.9994

Fax 228.832.9997

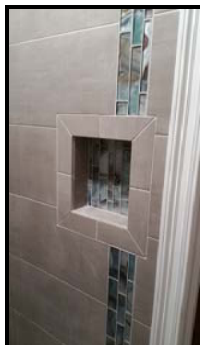
14376 Campground Road  
Saucier, MS 39574

## DESIGN SERVICES

- Programming
- Space Planning
- Interior Drawings & Details
- Tenant build-out
- Test Fit Plans
- Int/Ext Building Finishes
- Modernization
- Branding
- Specifications
- Ergonomics Review



- ① DESK CHAIR, MID BACK
- ② GUEST CHAIR
- ③ KEYBOARD TRAY
- ④ PENCIL DRAWER
- ⑤ MOBILE PEDESTAL, BOX BOX FILE
- ⑥ 36" CORNER WORKSURFACE
- ⑦ 36"x24" WORKSURFACE
- ⑧ 48"x24" WORKSURFACE
- ⑨ 60"x24" WORKSURFACE
- ⑩ 36" UPPER STORAGE BIN W/ FLIPPER DOOR, TASK LIGHTING & TACKBOARD
- ⑪ 48" UPPER STORAGE BIN W/ FLIPPER DOOR, TASK LIGHTING & TACKBOARD
- ⑫ 36"x20" STORAGE TOWER W/ DOOR, HALF WARDROBE, HALF SHELVES



## PROCUREMENT

- Audio / Visual
- Cabinetry & Hardware
- Door Hardware
- Faux Finishes
- Flooring & Tile
- Lighting
- Outdoor Furniture
- Signage and Art
- Trash Receptacles
- Wallcoverings
- Window Treatments
- MS State Vendor Lines